

STAGE, MAIN HALL, BAR AREA

FLOOR PLAN

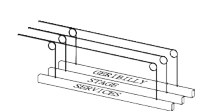
1:100 @ A3

MK 24/08/21
REV'D 11/01/2022

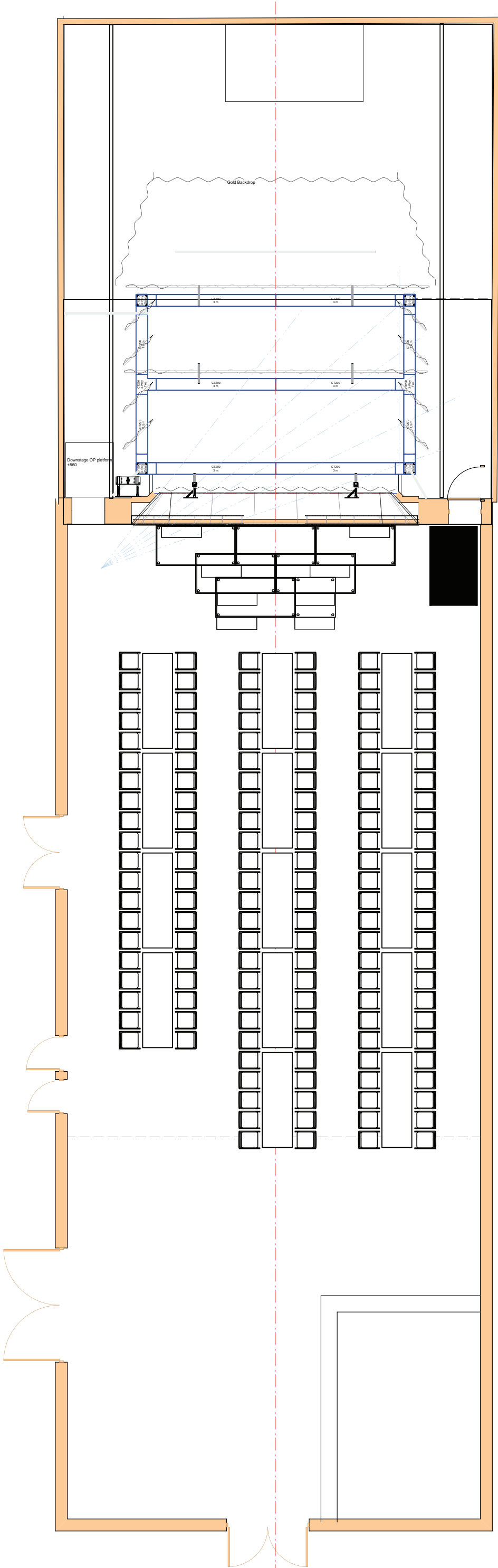
AS BUILT



Marcus Kelson
0417 496 130



William Hopper
0414 249 326



STAGE, MAIN HALL, BAR AREA

FLOOR PLAN - BANQUET

140 PAX

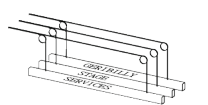
1:100 @ A3

MK 24/08/21
REV'D 11/01/2022

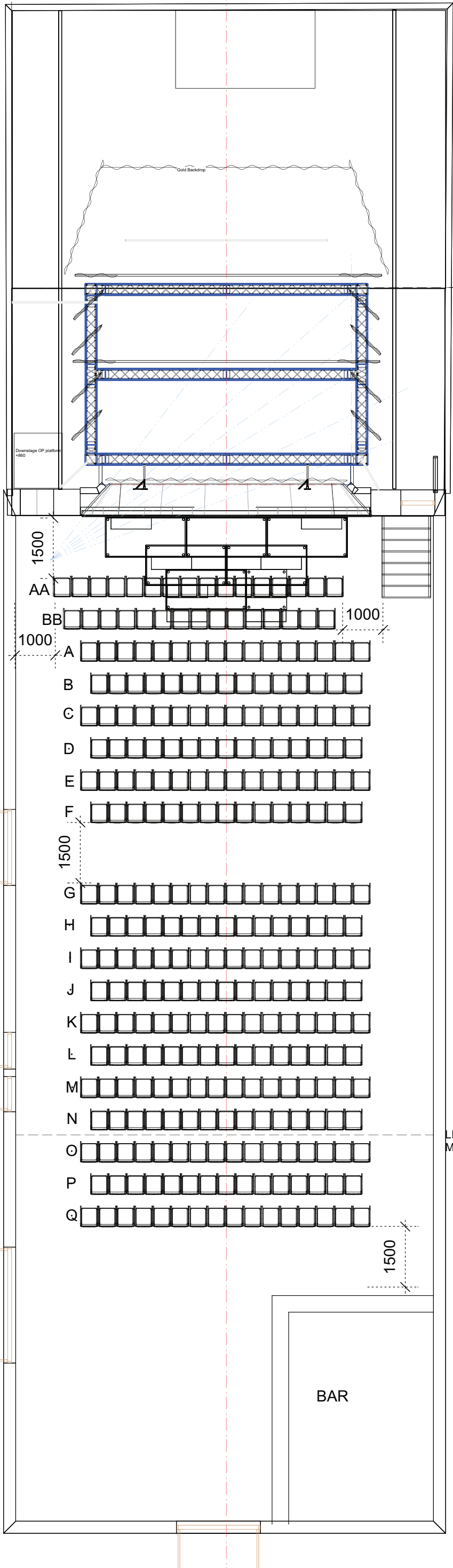
AS BUILT



Marcus Kelson
0417 496 130




William Hopper
0414 249 326



LINE OF RAKE CHANGE

LINE OF CARPET/MEZANINE OVER



KEYSTONE
Est. 1889

STAGE, MAIN HALL, BAR AREA


FLOOR PLAN & SECTION - THEATRE

295 SEATS
261 WITH CABARET STEPS


1:100 @ A3

MK 24/08/21
REV'D 11/01/2022

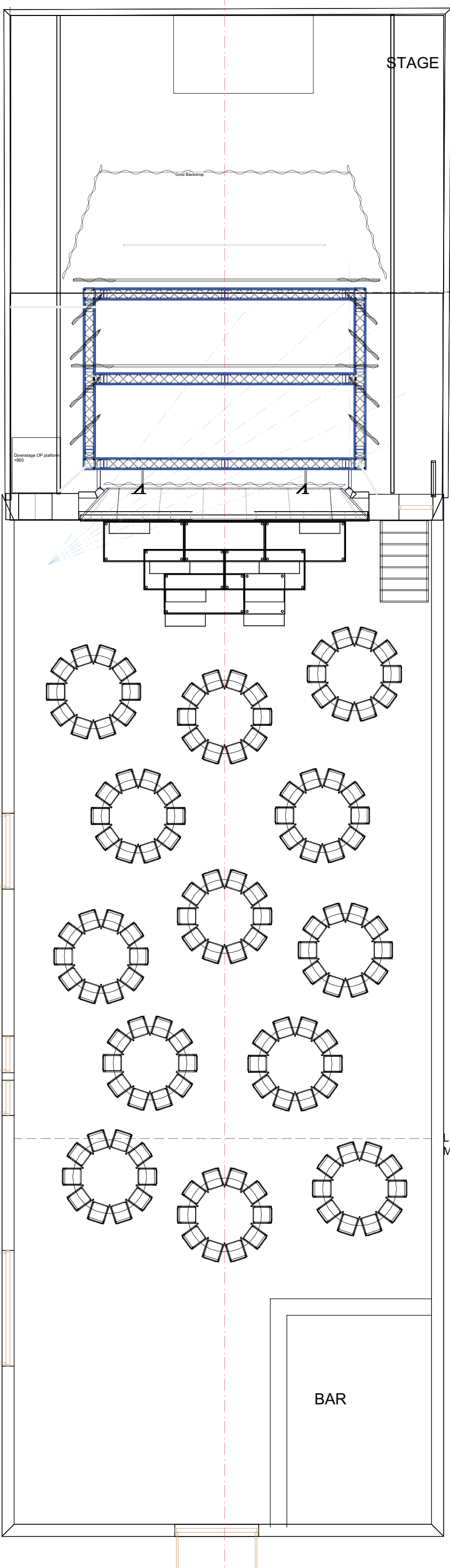
AS BUILT



TTS&S
Technical Theatre Services & Solutions
Marcus Kelson
0417 496 130



William Hopper
0414 249 326



STAGE

LINE OF
RAKE CHANGE

LINE OF CARPET/
MEZANINE OVER

BAR


KEYSTONE
 Est. 1889

STAGE, MAIN HALL, BAR AREA
 FLOOR PLAN & SECTION - CABARET

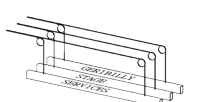
130 SEATS

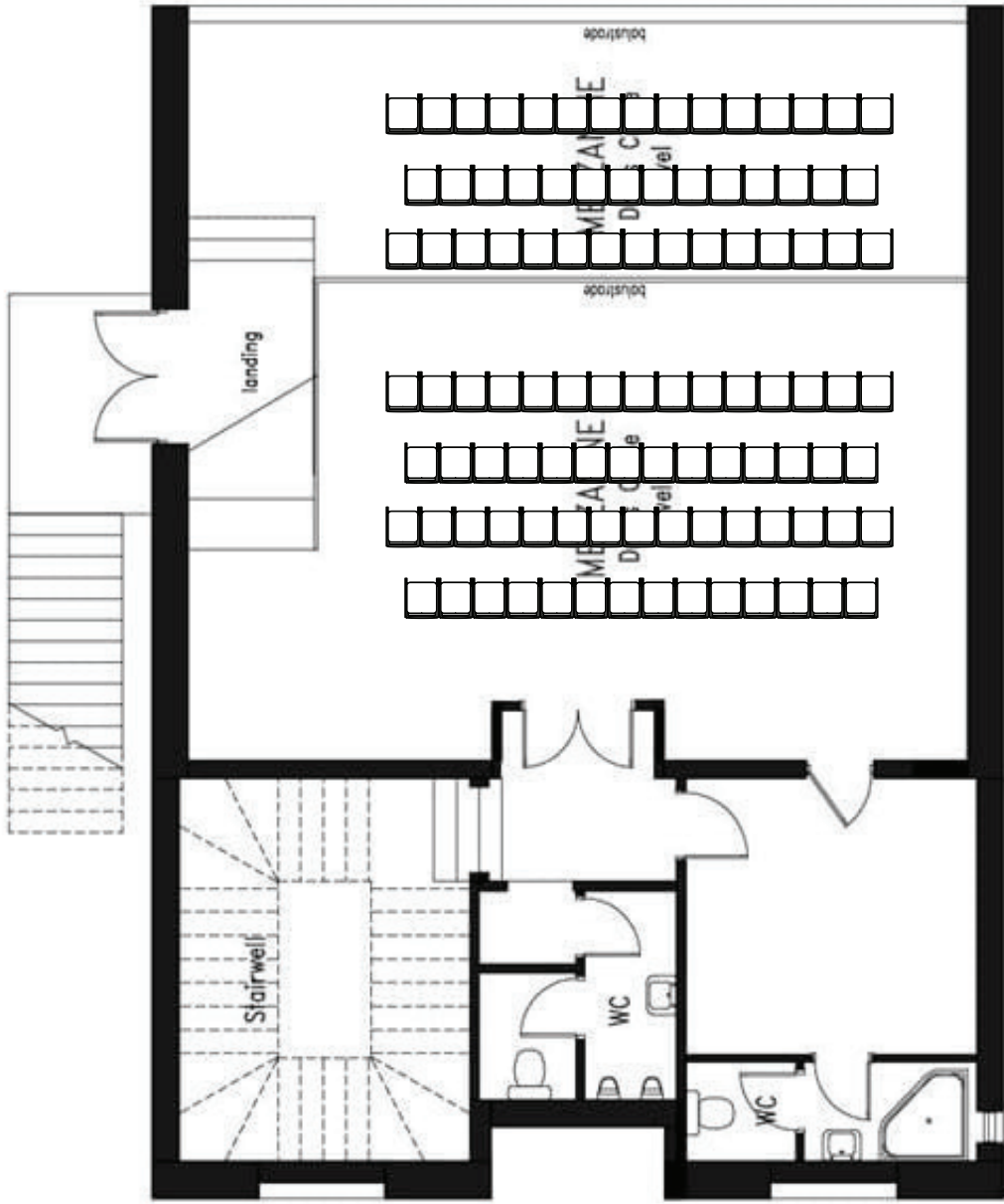
1:100 @ A3

MK 24/08/21
 REV'D 11/01/2022

AS BUILT


TTS&S
 Technical Theatre Services & Solutions
 Marcus Kelson
 0417 496 130


 William Hopper
 0414 249 326



MEZANINE

FLOOR PLAN - THEATRE

102 SEATS

1:100 @ A3

MK 24/08/21
REV'D 11/01/2022

AS BUILT

