



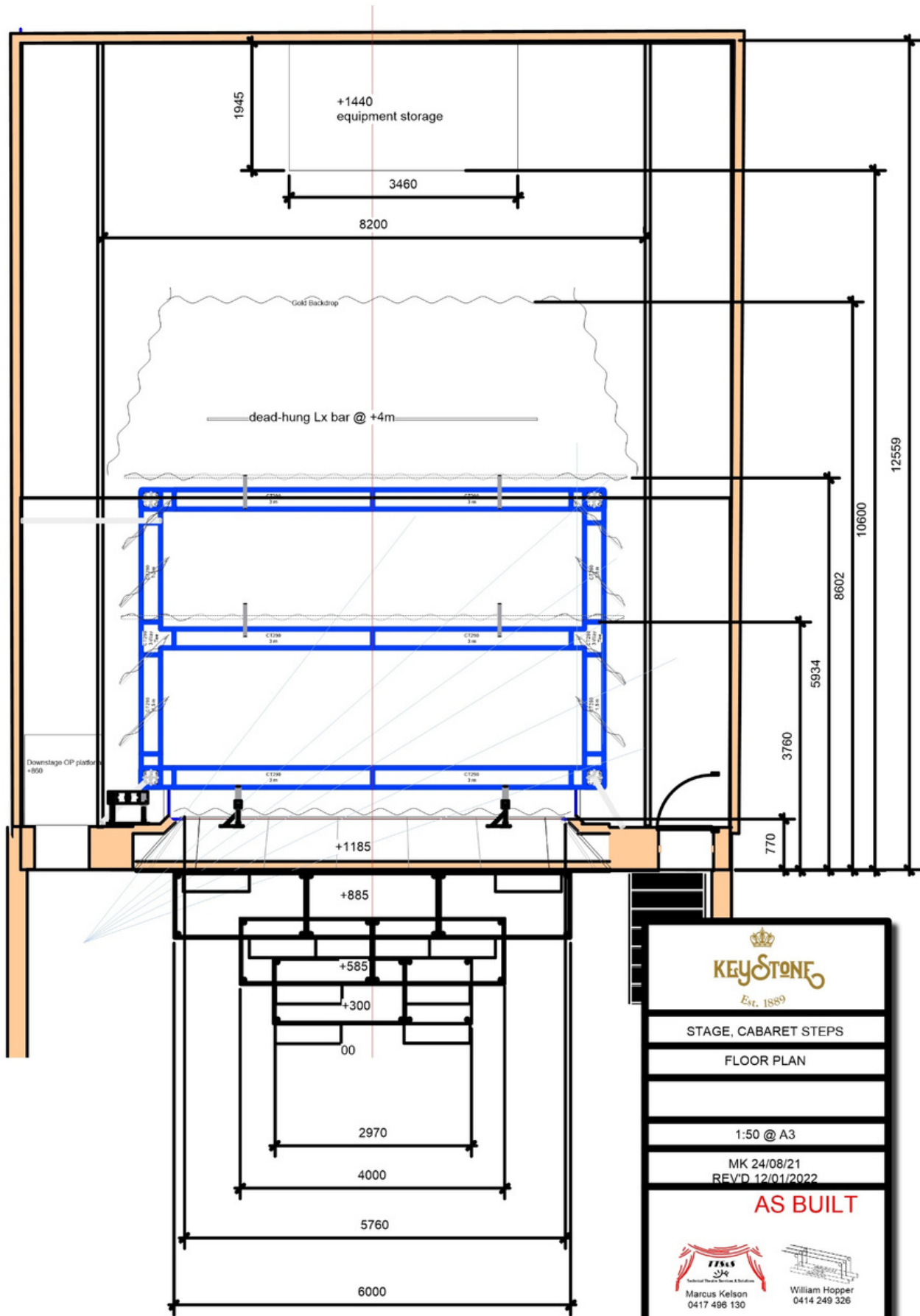
THEATRE TECHNICAL SPECIFICATIONS

2024

DIRECTOR: TRISH CARR

Tel: (02) 6332 5492
After Hours: 0411 058 704
E-mail: trish@keystone1889.com
Website: www.keystone1889.com
Address: 99 Keppel Street
Bathurst NSW 2795

Keystone 1889 is an historic building, Built in 1889 as a masonic hall, there is a double raked stage, a flat floor auditorium with a bar and lounge area at the rear below a 2 tiered mezzanine gallery. There is also a large space upstairs which was originally the Temple Ballroom. Above the stage, there are galleries at the rear and at each side from where an old hand-line and pin-rail system remains. Due to structural concerns, access to these galleries is prohibited. There is a table-top truss structure on stage which supports masking elements and provides overhead lighting positions accessible by step ladder. 2 sets of cross-stage tracked tabs allow the stage depth to be flexible to accommodate different styles of event.



THEATRE DIMENSIONS

Proscenium	Width	5880mm
	Height to underside of house curtain	3800mm
Stage Width	Wall to wall	10640mm
	Centre Line to PS wall	5230mm
	Centre Line to OP wall	5230mm
Stage Depth	Cabaret steps to apron	2640mm
	Apron to House Curtain line	770mm
	Apron to mid-truss drape line	3800mm
	Apron to mid-stage drape line(change of rake)	5960mm
	Apron to upstage fixed drape	8600mm
	Apron to US storage cupboard	10600mm
	Apron to upstage wall	12520mm
Stage Height	To underside of truss DS	3680mm
	To underside of truss US	3500mm
	To underside of side stage gallery floors	5100mm
	To underside of upstage gallery floor	4100mm
	From auditorium floor at apron	1185mm
Width between Fly Galleries		8200mm
Stage Floor	Tongue and groove timber	
	Rake 2.5°to	
	US rake 4° from 6m US of apron	
	Load rating	750 kg/sq m
House Curtain:	Red Velour. Single purchase counterweight operated DSOP	
Stage Drapery	<p>Tabs: 2 sets flat black wool on manually operated heavy duty tab tracks. Each half 3500mm wide</p> <p>Legs: 4 pairs flat black wool each 1200mm (w) x 3500 (h) on swivel mount</p> <p>US legs 1 pair 2700mm (w) fixed.</p> <p>Borders: 2 only Black</p> <p>US Backdrop: 1 only gold velour 6m wide x 8m drop (Flat, fixed)</p>	

SCENERY / STAGING

Portable Staging	Cabaret stage extension	5 @ 2m x 1m, 2@ 1m x 1m
------------------	-------------------------	-------------------------

LIGHTING

16 X Event Lighting LED

1 x 4 Channel Dimmer

3 x Chauvet DJ wireless DMX receivers.

1 x Chauvet DJ Wireless DMX Transmitter

LX Console – Chamsys MagicQ OnPC (extra wing only)

3 Phase Power: 1 x 32A 3ø Outlet Prompt Side

1 x 32A Distro for Hot power. (3 banks of 4 double outlets)

Lighting Positions

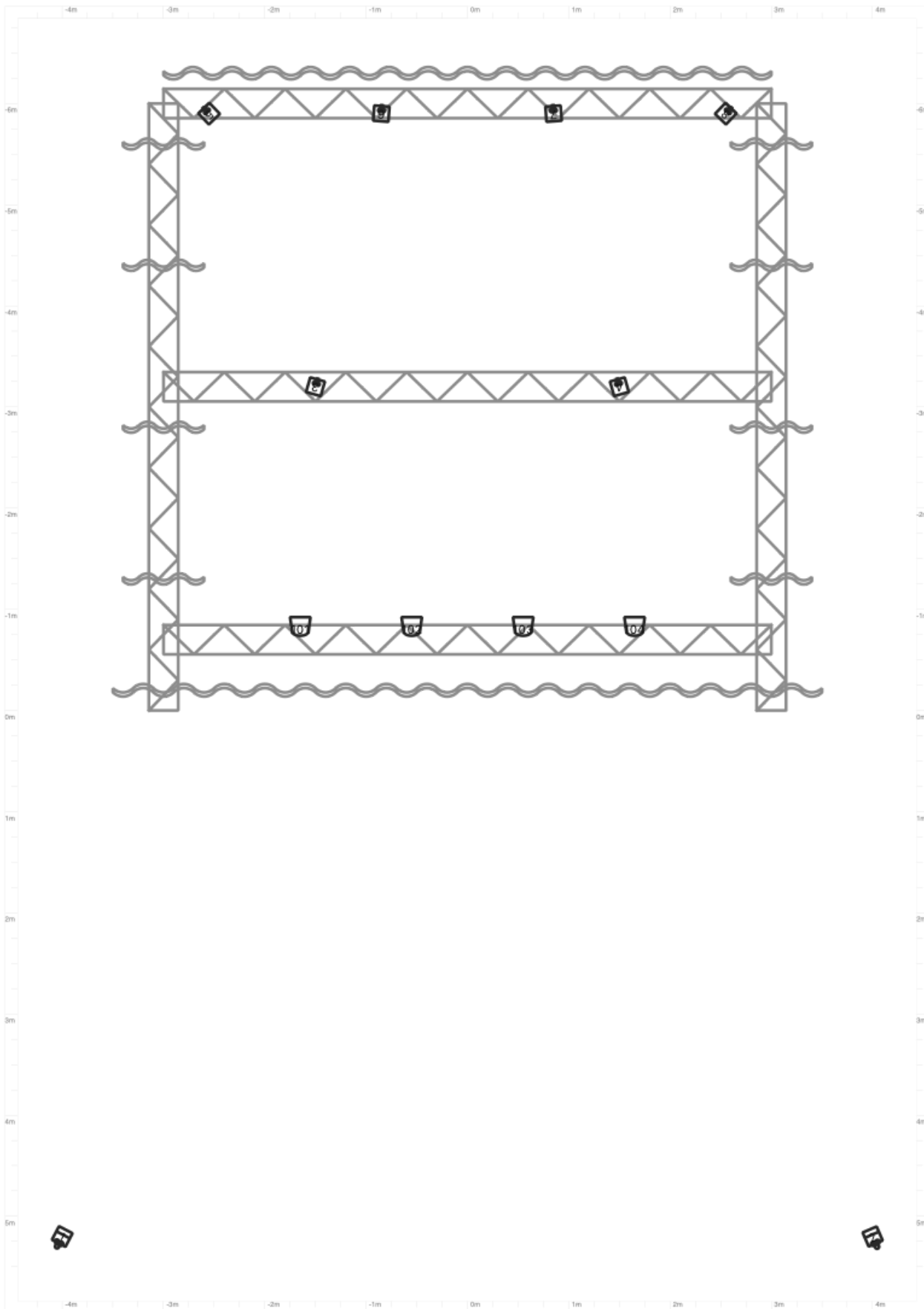
F.O.H. Proscenium Booms (20kg Max)

As per Venue Truss.

Keystone Event Lighting Base : Fixture Patch

Head No	DMX	Position	Hang	Manufacturer	Model	Mode
1	01-001			Event Lighting	PAR12x12L	6ch
2	01-007			Event Lighting	PAR12x12L	6ch
3	01-013			Event Lighting	PAR12x12L	6ch
4	01-019			Event Lighting	PAR12x12L	6ch
5	01-025			Event Lighting	PAR12x12L	6ch
6	01-031			Event Lighting	PAR12x12L	6ch
7	01-037			Event Lighting	PAR12x12L	6ch
8	01-043			Event Lighting	PAR12x12L	6ch
9	01-060			Event Lighting	PAR12x12L	6ch
10	01-066			Event Lighting	PAR12x12L	6ch
11	01-072			Event Lighting	PAR12x12L	6ch
12	01-078			Event Lighting	PAR12x12L	6ch
13	01-084			Event Lighting	PAR12x12L	6ch
14	01-090			Event Lighting	PAR12x12L	6ch
201	01-100			Event Lighting	LM7x12wWash	16ch

Keystone Event Lighting Base : Flown Plot Heads



AUDIO EQUIPMENT

Sound Console:

1 x Soundcraft Ui16

Main FOH:

2 x Tannoy VXP 12 - Self Powered Dual Concentric Loudspeakers

2 x Cerwin Vega 18" Folded Horn Subs (Mono Send)

DMX Analogue Crossover

Delays/ Bar Audio

2 x F1 Bose Speakers (Wall Mounted)

Foldback:

2 x Opera speakers rear front of house/bar area

2 x Behringer Eurolive F1320D Self Powered Foldback Speakers.

Inputs:

2 x Sennheiser EW-100 835 G4 (H/H Transmitters)

4 x Shure SM58

3 x Microphone Stands

1 x Speaker's Lectern

2 x Hanging Choir Mics.

FACILITIES

Dressing Rooms

No. 1 & 2 for 29 artists. Each room 7.8m x 7.5m

No. 3 & 4 for 4 artists. Each room 2.4m x 3.7m

All with individually lit make-up benches

All with separate shower and toilet facilities

All with Program Relay & CCTV monitors

6 x Large costume rack trolleys, length 1900mm

2 x Medium costume rack trolleys, length 1000mm

2 x Small costume rack trolleys, length 750mm

Tour/Production Office

1 x Office 3.8m x 2.1m

Laundry

3.7m x 4.6m.

Equipped with the following items:

1 x 7kg automatic washing machine

1 x 5kg tumble drier

1 x Cabinet drier

1 x Ironing board & Iron

1 x Washing Tub

Green Room

Dimensions/ facilities

STAGE MANAGEMENT

Paging System	Paging to all backstage & production areas as well as program relay.
Internet Access	Internet Access available upon request throughout Theatre & Backstage via Wifi & Ethernet connection.

TEMPLE BALLROOM

Available for hire as rehearsal space, break-out area, chorus dressing etc.
Dimensions 10.5m x 14m